




*FRIENDS OF SCOTCHMANS CREEK  
AND VALLEY RESERVE INC.*

Reg No A0037872K

**RIVER OFFICER REPORT AGM 2024**

**May Lee**



A photograph of a small, clear stream flowing through a dense forest. The water is shallow and reflects the surrounding greenery. Large, moss-covered rocks are scattered along the stream bed and banks. The forest is thick with various types of trees and lush undergrowth, including tall grasses and ferns. Sunlight filters through the canopy, creating dappled light on the forest floor.

River  
Officer  
Report  
2024 out  
soon !





Behind Blue Cross Age Care



Waverley Rd MtW wetlands

## Litter is a big issue !

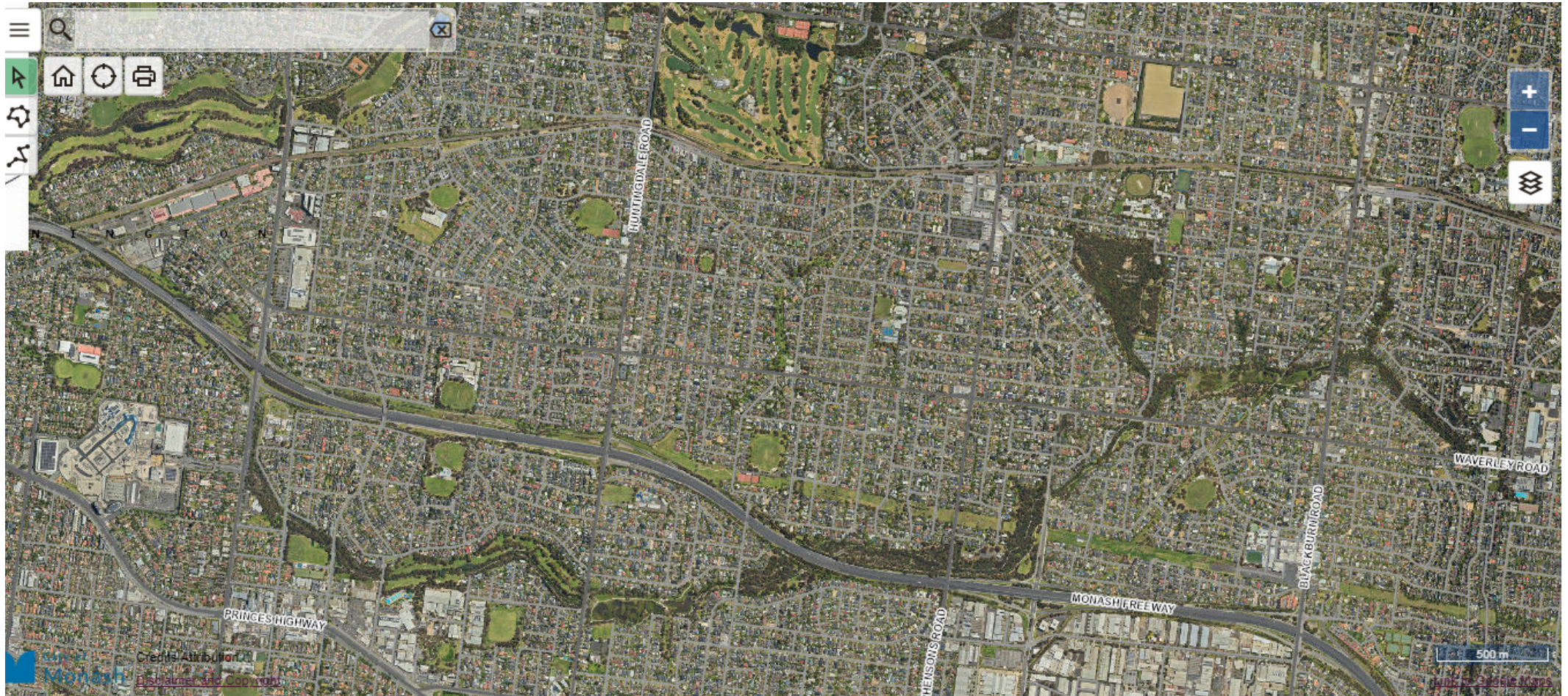
Fairway Reserve near Forster Rd entrance



Crosby arm, behind Lilian St GW







<https://mapping.monash.vic.gov.au/>  
Aerial Dec 2023



# Why photopoints

A picture is worth a thousand words

Record & monitor visual changes

Consistency (different observers)

Used to support other monitoring efforts



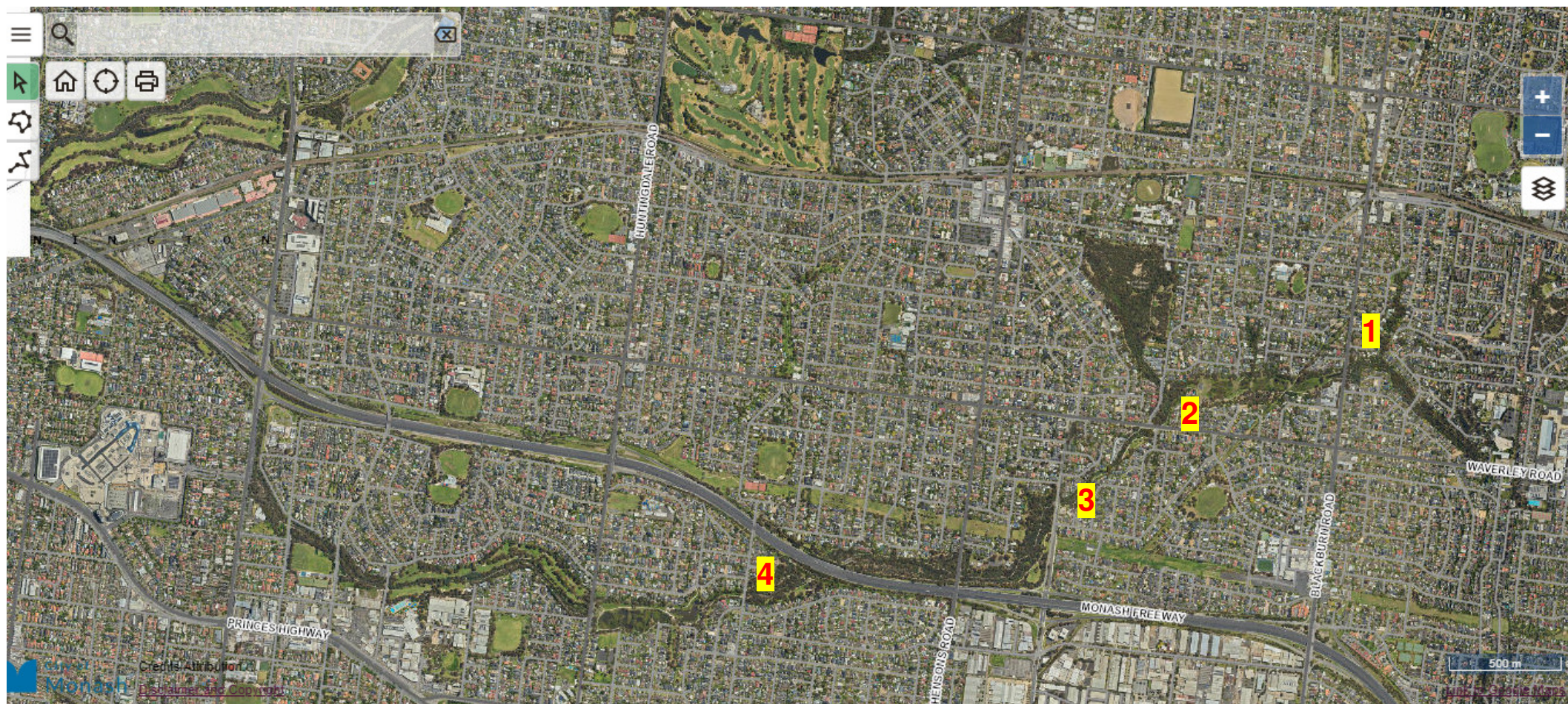
## **Pros**

- Low impact on monitoring site
- Requires minimal training
- Everyone has a camera on their phone (+GPS)
- Effective communication tool than charts, tables & graphs

## **Cons**

- Only detects large changes from camera position
- Qualitative rather than quantitative
- Light conditions make changes difficult to detect
- Over time, field of view is restricted or marker is obscured by vegetation



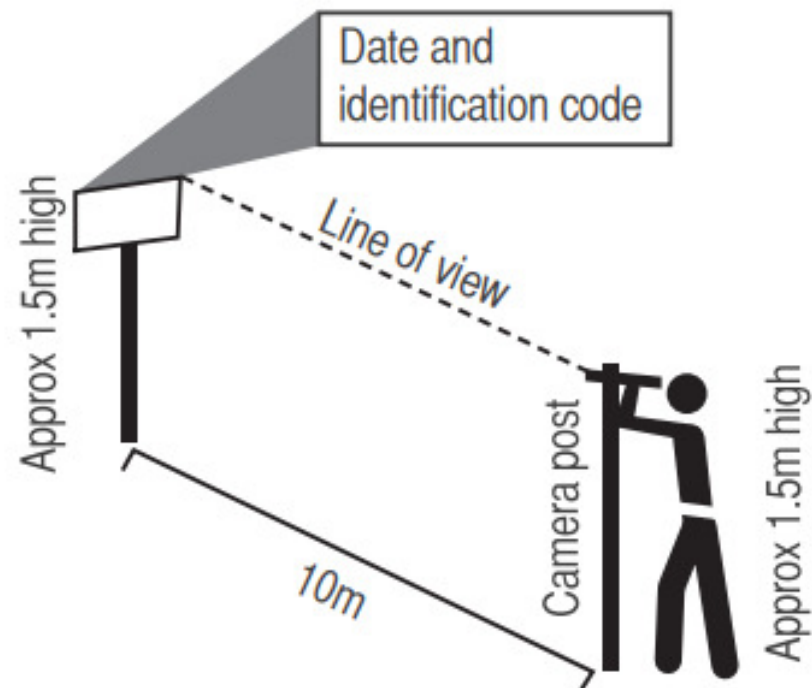




## Proposed monitoring sites

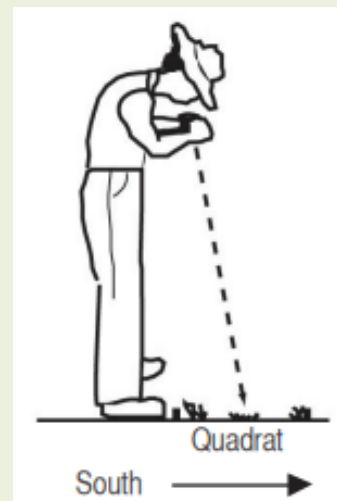
Photopoint name & no.	1	2	3	4
Location description	Crosby arm, behind Wedge Ct ?	jt Valley Creek	behind 16-20 Janfourd Ct	North bank Stanley Ave East Reserve
GPS		-37;53;4.5459599 145:8:14.2688390		
Photopoint direction	north	west	west	north
Camera post / camera height				
Photograph date				
Photograph number/name				
Comments /observations				





**Figure 2:** Example of Photopoint set up - side view

Source: Friends of Sturt Gorge, 2010



## Spot photograph

A spot photograph is an image taken looking vertically down on a marked spot or a quadrant from head height (Fig. 3). This is used for recording ground cover, species and organic litter for a standard sized area.

**Figure 3:** Spot photograph monitoring

Source: Grodecki & van Willing, 2010



**Looking south from Regent St bridge  
-37; 53; 2.778358999 145; 8; 16.305359999**

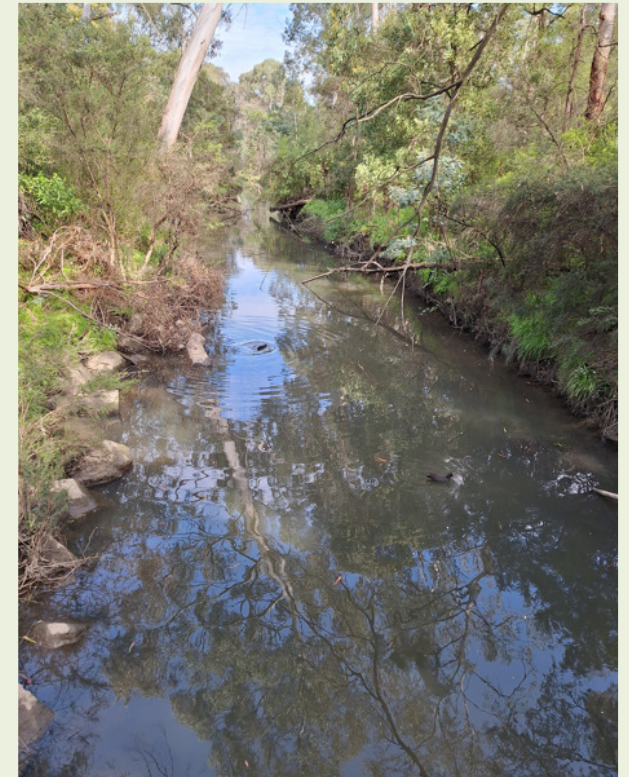
**23/7/2023**



**8/1/2024**



**8/9/2024**





**Looking at inlet of Valley Ck (-37;53;4.5459599 145;8;14.2688390) –  
compare the water colours**

**21/5/23  
overflowing**



**8/1/24  
overflowing**



**6/2/24  
not flowing**



**13/2/24  
Slightly overflowing**





---

**Thank you for  
your attention !**

